

REPORTS FROM THE SCIENTIFIC EXPEDITION TO THE NORTH-WESTERN
PROVINCES OF CHINA UNDER THE LEADERSHIP OF DR. SVEN HEDIN
— THE SINO-SWEDISH EXPEDITION —
PUBLICATION 40

III. Geology

5

SOME NOTES AND DATA CONCERNING
DUNES AND SAND DRIFT
IN THE GOBI DESERT

BY

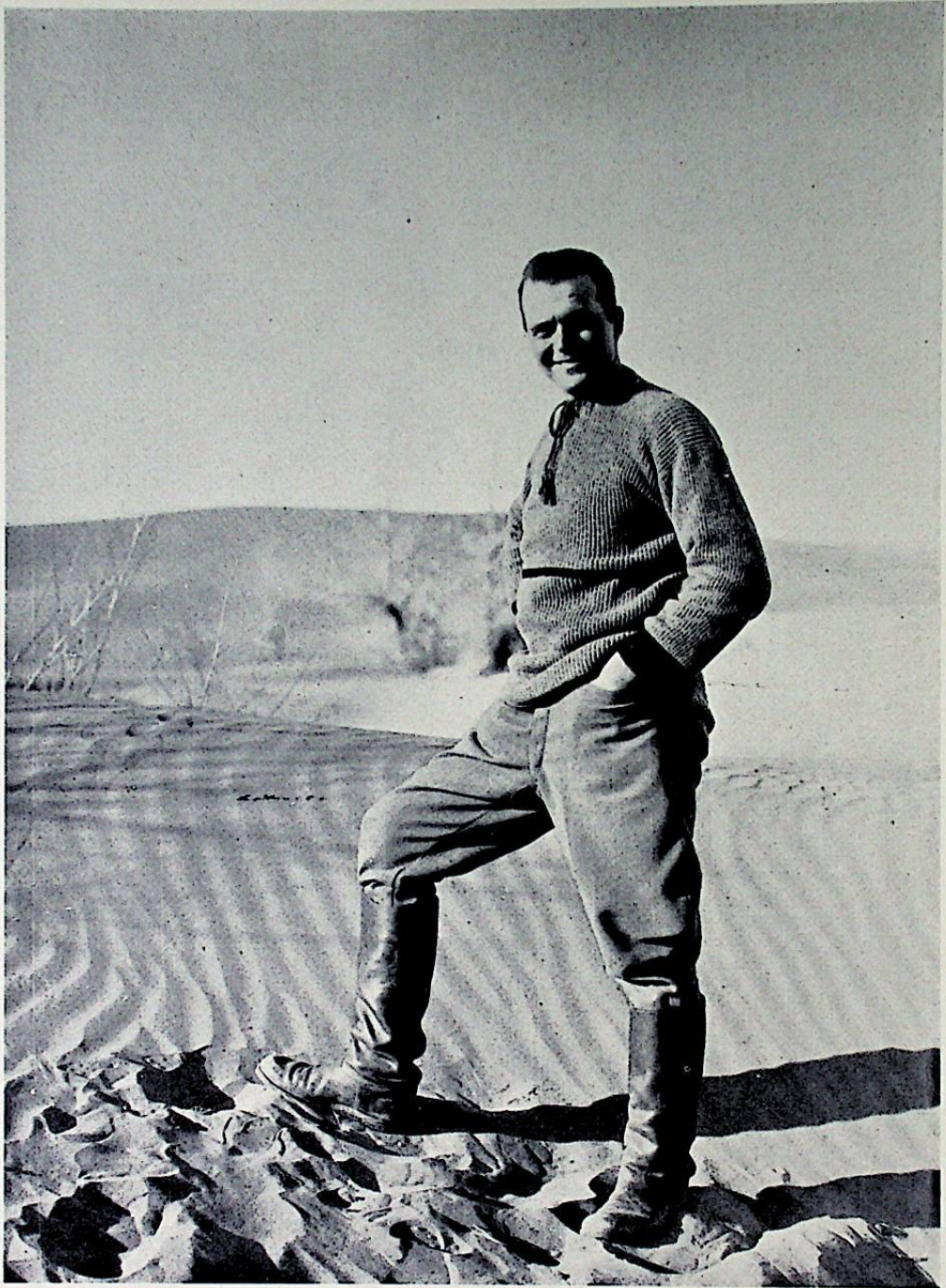
NILS G. HÖRNER

STATENS ETNOGRAFISKA MUSEUM

STOCKHOLM 1957

CONTENTS

PREFACE by G. Montell and E. Norin	7
INTRODUCTION	15
SCOPE OF DUNE AND DRIFT SAND INVESTIGATION . . .	17
Mapping	17
Wind Observations	19
Air Pressure Graphs	20
Temperature	20
Relative Air Humidity	20
Gustiness and its Action on the Sand Drift	20
Sand Load of the Air	21
GRANULOMETRY OF THE SAND	22
Correction of Inventory Dimensions	28
Summary of some Results of the Comparison between Counting of Grains and Weighing, on the one hand, and Determination of "Inventory Weight" on the other	30
SOME SEQUENCES RELATIVE TO PREHISTORIC DUNES IN SWEDEN	38
REFERENCES	40



NILS G. HÖRNER

(1896 – 1950)